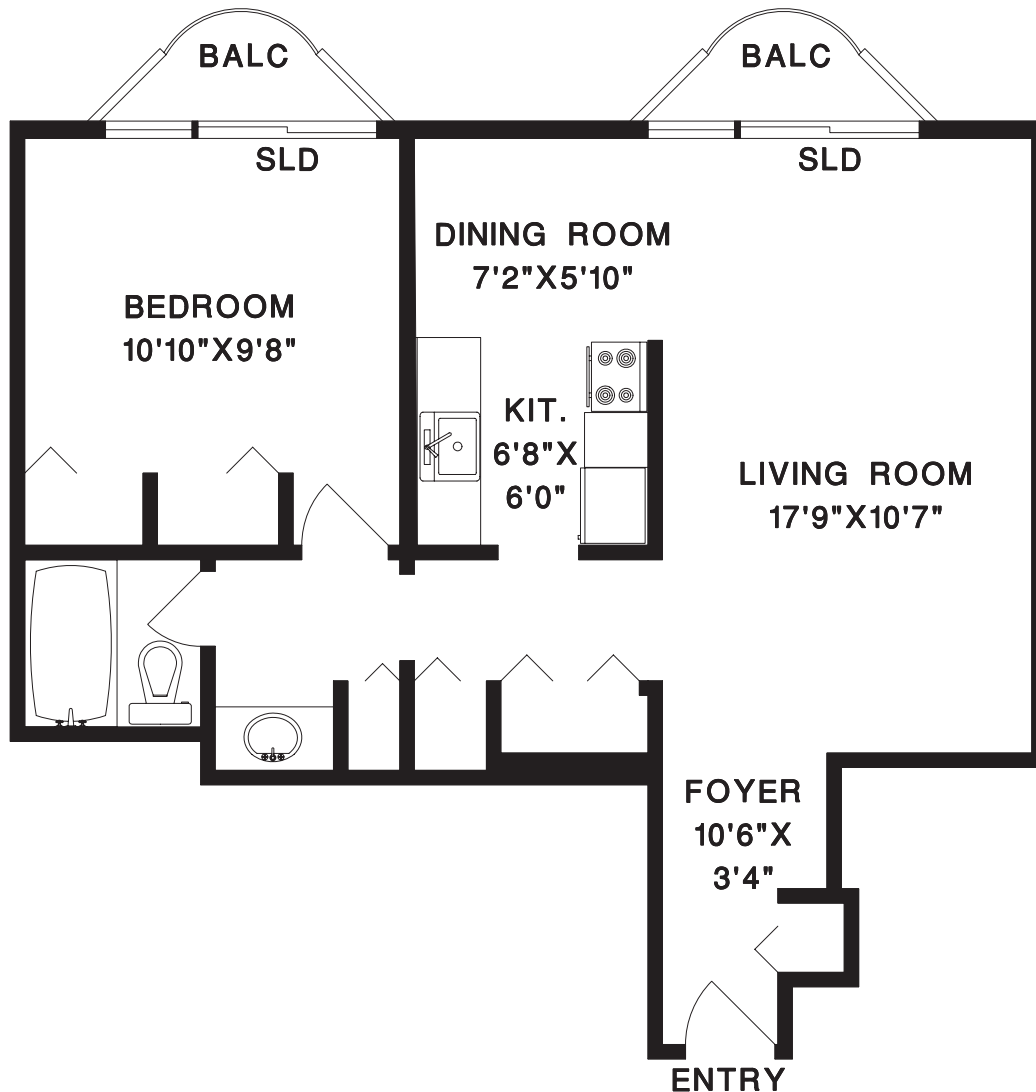


EMERALD TERRACE

Telephone: 604.685.6266
2045 Nelson Street, Vancouver

Plan B5 - 1 Bedroom Approx. 606 sq. ft.



Proudly managed by
Hollyburn Properties Limited

*All measurements are approximate and floor plans may vary. Please refer to actual suite for exact layout and measurements. E. & O.E.